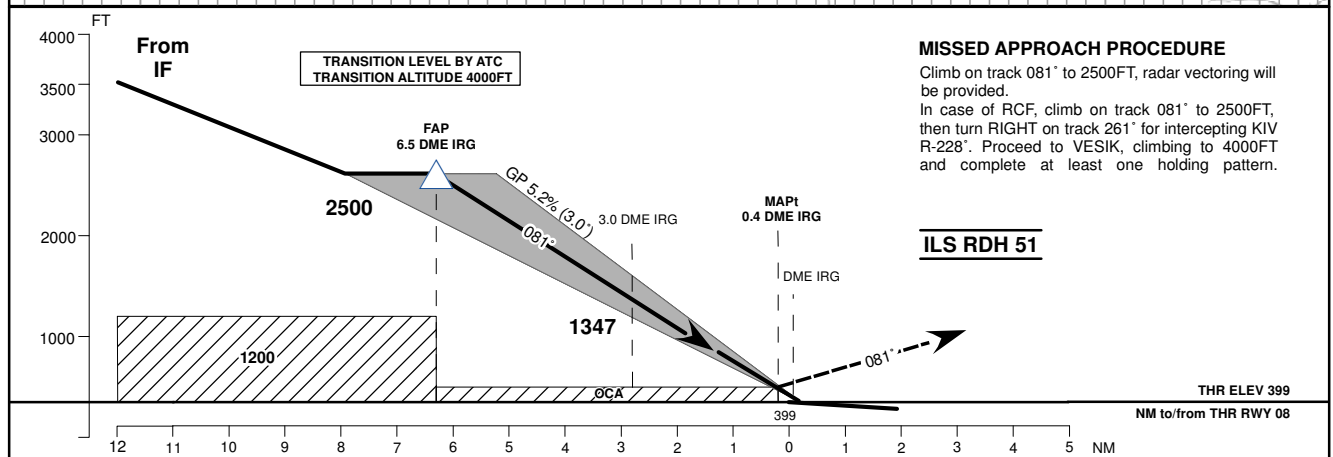
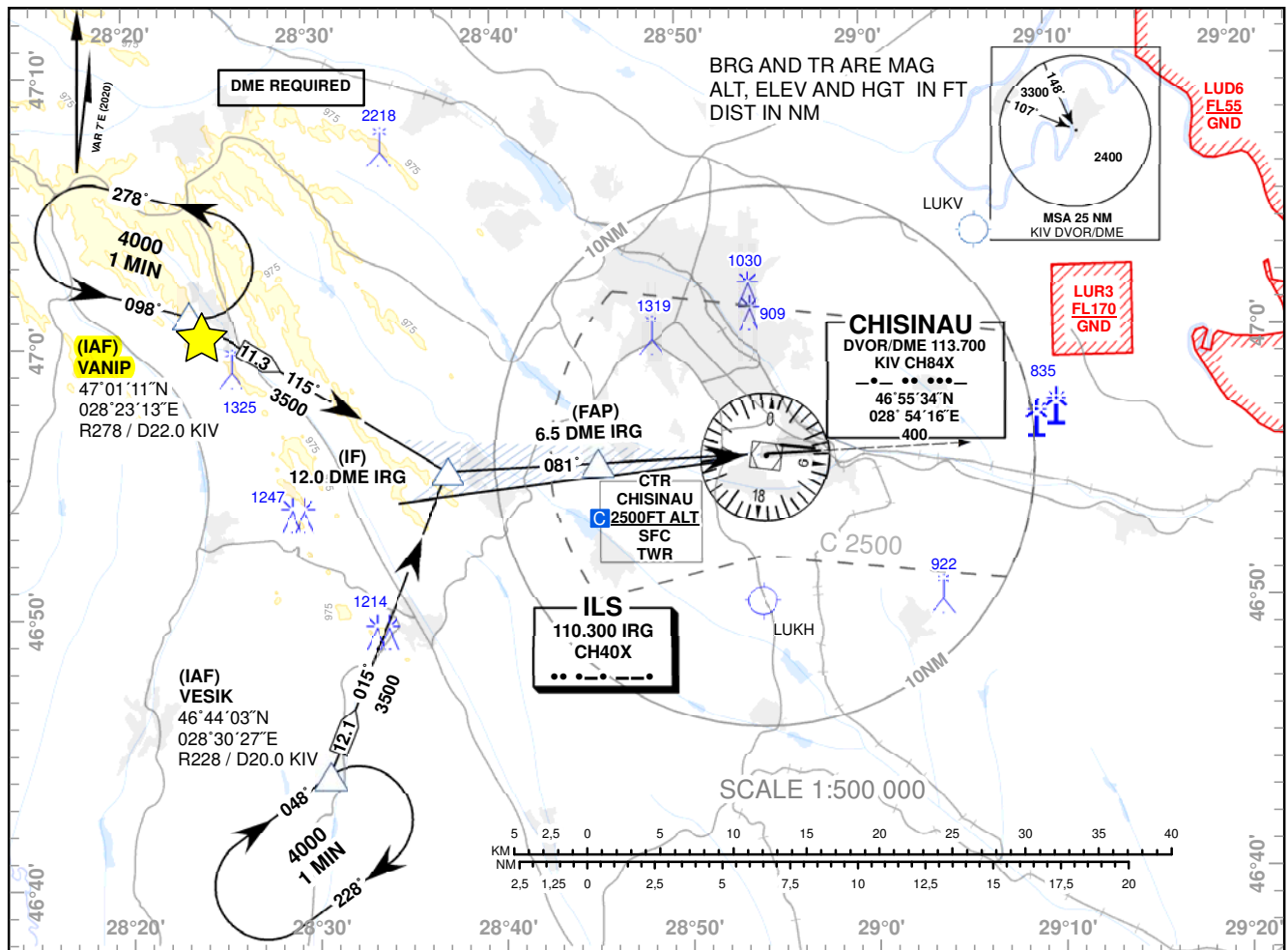


**INSTRUMENT APPROACH
CHART - ICAO**

 AD ELEV 399 FT
 HEIGHTS RELATED TO
 THR RWY 08 ELEV 399 FT

 APP: 133.300 MHz
 TWR: 118.100 MHz
 ATIS: 125.225 MHz

**CHISINAU/IntI (LUKK)
ILS CAT I & II RWY 08**


OCA (OCH)	A	B	C	D
ILS CAT I	551 (152)	563 (164)	571 (172)	582 (183)
ILS CAT II	463 (64)	480 (81)	492 (93)	506 (107)

DME IRG	7	6	5	4	3	2	1
DIST THR	6.8	5.8	4.8	3.8	2.8	1.8	0.8
ALTITUDE (Height)	2500 (2101)	2297 (1898)	1978 (1579)	1660 (1261)	1342 (943)	1023 (624)	705 (306)

Timing not Authorized for Defining the MAPt

GS	kt	80	100	120	140	160	180
DISTANCE FAP-MAPt 6.1NM	MIN:SEC	4:35	3:40	3:03	2:37	2:17	2:02
Rate of Descent (5.2%)	FT/MIN	425	531	637	743	849	955

Changes: Tables Rate of Descent and Altitude Corrected.

INSTRUMENT APPROACH
CHART – ICAO

CHISINAU/Intl (LUKK)
ILS CAT I & II RWY 08

AERONAUTICAL DATA TABULATION				
POINT	LATITUDE	LONGITUDE	BEARING GEO° (MAG°)	DISTANCE (NM)
IAF VANIP	470111.0N	0282313.0E	285.00° (278°) KIV	22.00 KIV
IAF VESIK	464403.0N	0283027.0E	235.00° (228°) KIV	20.00 KIV
IF	465515.5N	0283713.1E	088.29° (081°) IRG	12.00 DME IRG
FAP	465526.4N	0284512.9E	088.29° (081°) IRG	6.52 DME IRG
MAPt	465537.9N	0285411.2E	088.29° (081°) IRG	0.40 DME IRG